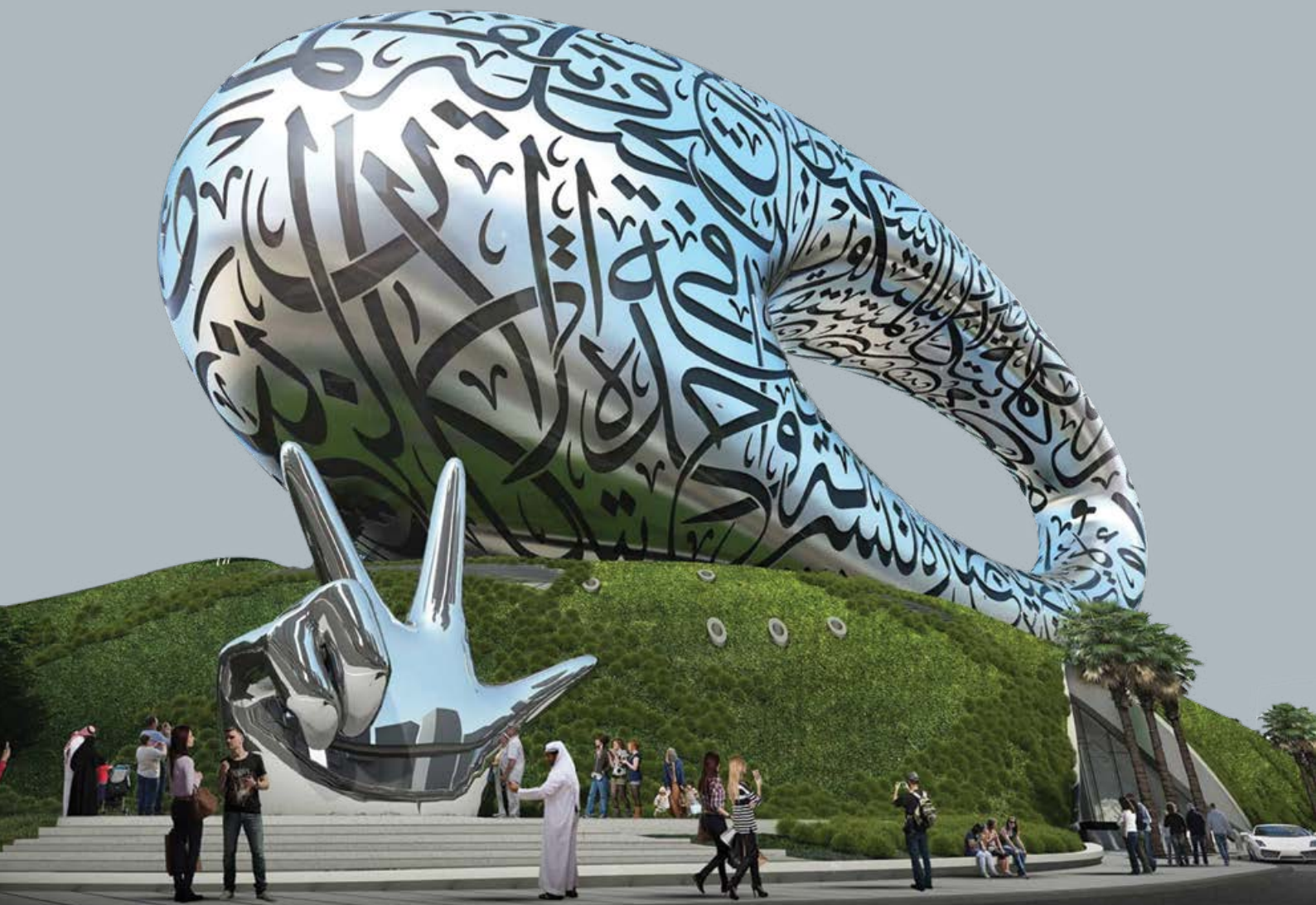




## WATER RIPPLE

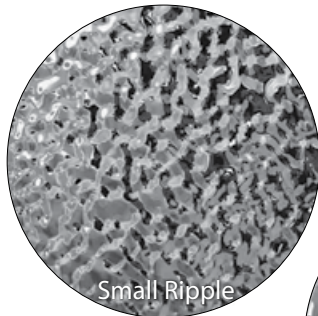


STAINLESS STEEL DECORATIVE FINISHES  
FOR ARCHITECTURAL APPLICATIONS

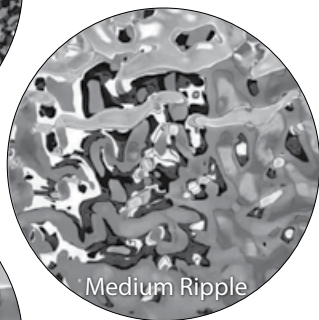
# WATER EFFECT CEILING

The water ripple sheet is produced by passing a thin mirror polished stainless steel sheet through a bespoke mould press.

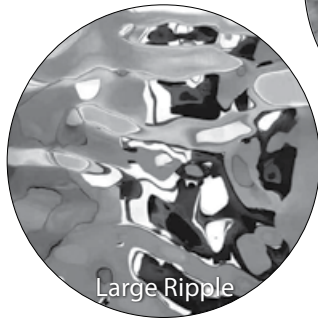
The press creates indentations or ripples in the metal which gives it its distinctive look.



Small Ripple



Medium Ripple



Large Ripple

## ADVANTAGES

- ✦ Durable - Sheets are made of 304/316 Grade stainless steel with superior corrosion resistance and heat tolerance.
- ✦ Nonporous with high density. This means that they won't absorb liquids or get dirty, which makes them ideal for use in areas which are not easily accessible such as ceilings.
- ✦ Attractive - Their unique pattern can really make a room pop with variety of color and décor.
- ✦ Easy to clean - You can just wipe them down with a damp cloth and they will look like new.
- ✦ Serene space transparent - Water ripple sheets don't reflect light, which makes them perfect for use in the whole space where you want a lot of natural light.

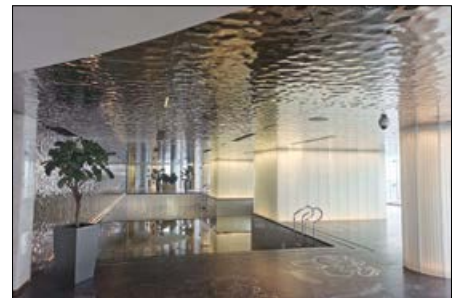
## USAGE



ENTRANCE DECORS



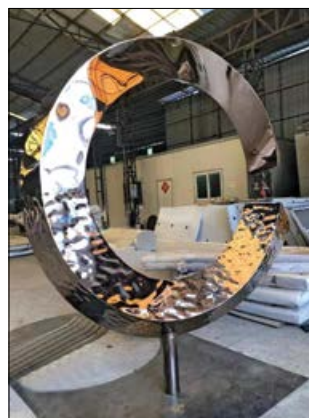
EXTERIOR CLADDING



CEILING



INTERIOR WALL CLADDING



SCULPTURES



COLUMN CLADDING

# FINISHES

## MIRROR

Mirror finishes are created by mechanically treating the surfaces with a series of progressively finer abrasives. Alternatively, a special rolling procedure is used which can simulate the appearances of mechanical abrasion. For this stage, it is essential to remove deep scratches, as any surface defects will be very noticeable on the finished products.

The final process involves buffing the surfaces for 5-10 minutes to create highly-reflective finishes. It is a popular finish among architects and interior designers.



## PVD

The PVD (Physical Vapor Deposition) process (sputtering) results in the deposition of plasma on the stainless steel surface, giving it its new strength and shine. The coloured surfaces include gold, rose gold, dark red, bronze, blue and black.

The PVD colours will not fade over time, and have the benefits of being more uniform in appearance and more abrasion-resistant than colouring, which is done by the electrochemical processes.



## TYPE 1 - METAL FRAMING (REMOVABLE PANEL)

SHOP DRAWING / SUBMITTAL REVIEW	
<input checked="" type="checkbox"/> APPROVED	<input type="checkbox"/> APPROVE WITH CHANGES NOTED
<input type="checkbox"/> REVISE AND RESUBMIT	<input type="checkbox"/> REJECTED
SUBMITTAL WAS REVIEWED FOR DESIGN CONFORMITY AND GENERAL CONFORMANCE TO CONTRACT DOCUMENTS ONLY. THE SUBCONTRACTOR IS RESPONSIBLE FOR CONFIRMING AND CORRELATING DIMENSIONS AT JOBSITE FOR TOLERANCE, CLEARANCE, QUANTITIES, FABRICATION PROCESSES AND TECHNIQUES OF CONSTRUCTION, COORDINATION OF HIS WORK WITH OTHER TRADES AND FULL COMPLIANCE WITH CONTRACT DOCUMENTS	
By: <i>Jem Smith</i>	Date: <i>6/1/19</i>
ABC Construction Ltd Besttown, IA 12345	



**Step 1** - Shop drawing approval

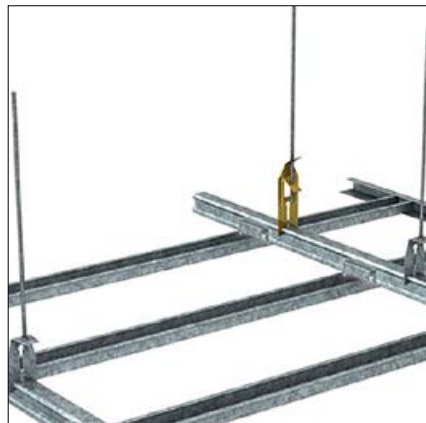
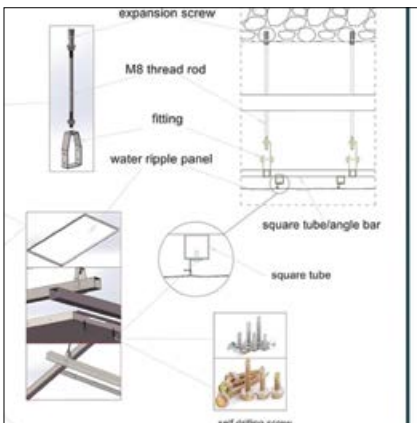
**Step 2** - Site survey and setting out

**Step 3** - Obtain all clearances such as MEP & other services

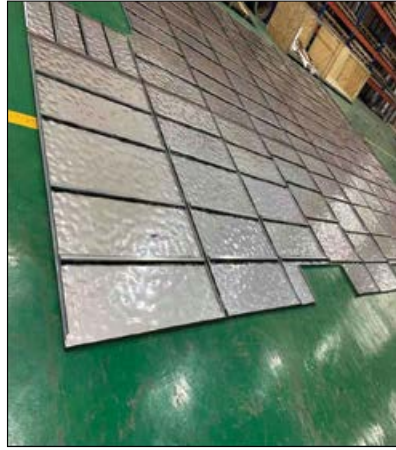
**Step 4** - Installation of scaffolding

**Step 5** - Fixing of suspension grid

Ceiling anchors will be fixed to slab shooting gun at spacings as per approved design. Hooked steel rods shall be inserted into the anchors. The length of these rods will be equal to the height of ceiling. The vertical drop supports are connected to runners which shall be spaced as per approved design. Grid frames is formed using cross frames.



**Step 6** - Fixing of ceiling tiles - After MEP final clearances for ceiling system, ceiling tiles constructed using rippled stainless-steel sheets will be fixed by laying through the suspension grid system. In case of any cut outs or holes required, these shall be coordinated for services such as diffusers, sprinklers and light fittings.



**Step 7** - QA/QC inspection

**Step 8** - Client inspection



## TYPE 2 - CLADDING USING SEALANT

**Step 1** - Suspension frames

**Step 2** - Fix grid frames using metal tubes

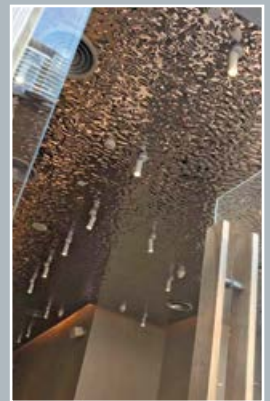
**Step 3** - Fix 10mm thick wooden board or Ply on ceiling

**Step 4** - Apply adhesive on Stainless steel rippled sheet

**Step 5** - Cladding Stainless steel sheets on the wooden ply. Gaps/groves as per approved design

**Step 6** - Support the ceiling panels with wooden strips for 12 hours to dry completely

**Step 7** - Remove protective frames



 **STAINLESSINOX** International FZCO

EWTA 78, Jebel Ali Free Zone North, Dubai, UAE

Tel: +971 4 880 6198, E-Mail: [info@stainlessinox.com](mailto:info@stainlessinox.com), Web: [www.stainlessinox.com](http://www.stainlessinox.com)