

LIQUID METAL COATING

# PRESENTATION STAINLESS INOX

*The Art of Coating*

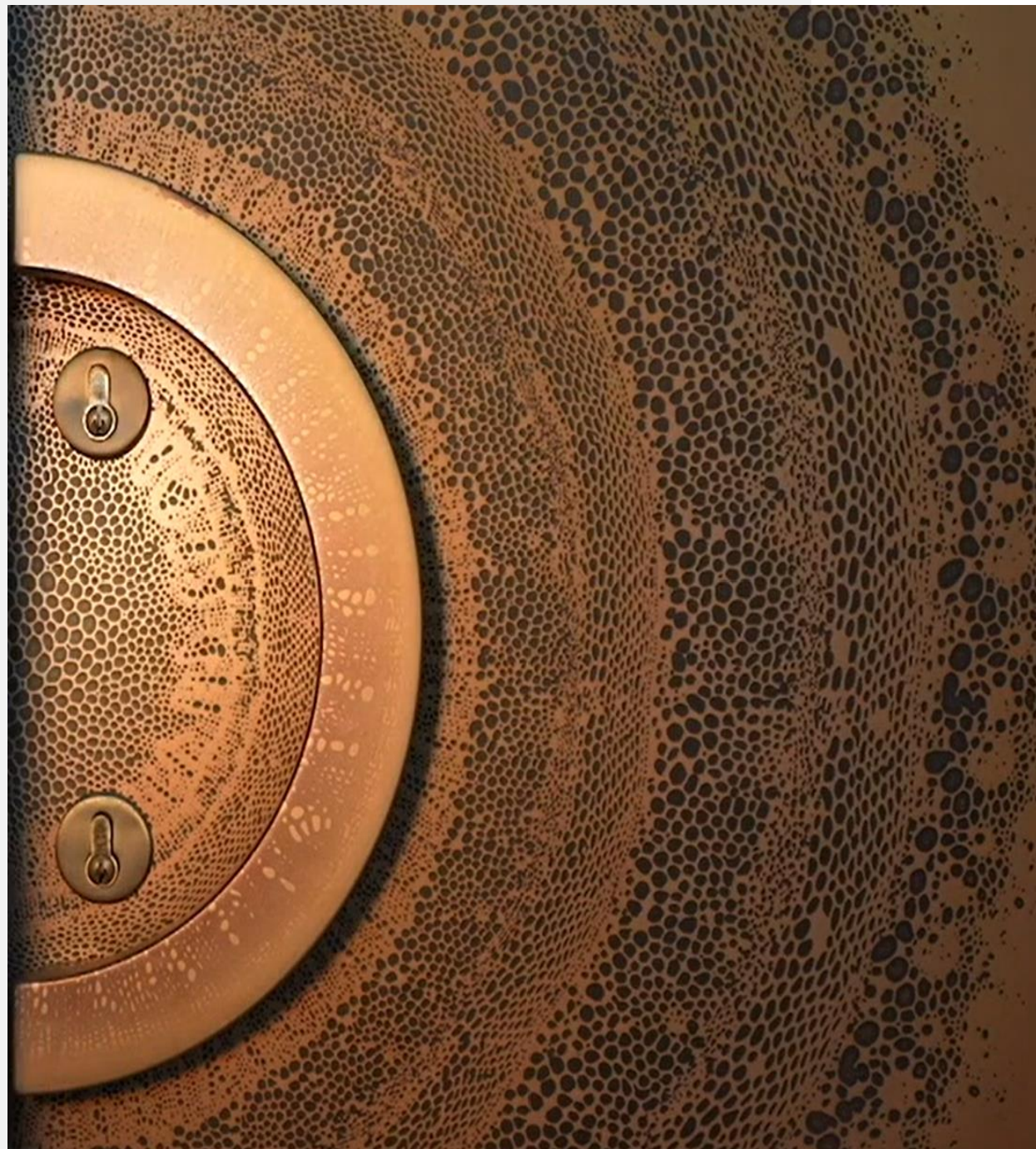


# ABOUT US

Stainlessinox offers design solutions for architects, designers, and builders, providing a diverse range of authentic metal, concrete, terrazzo, and terracotta surfaces. We also supply bespoke doors, feature walls, luxury cabinets, landscape art and furniture, sheet metal, and architectural sculptures.

Founded in 2001, Stainlessinox emerged after extensive research and development in metal manipulation for surface applications. This led to a Dubai first: the ability to adhere genuine metal to any substrate, achieving the appearance of solid metal without its inherent limitations. In the five years since our inception, we have remained true to our original DNA, continuously developing products and services. We now offer ten core surface applications with infinite combinations.

Stainlessinox expands the design and construction possibilities of any project, serving as a unique source of inspiration for architects and designers. Our dedicated team collaborates with you to fully realize the potential of Stainlessinox products, providing a customized service from initial concept to final completion.





# OUR PROMISE

- **COMMITMENT TO THE ENVIRONMENT**

At Stainlessinox, our commitment to preserving the environment for future generations drives us to prioritize the use of recycled materials and sustainable products whenever possible. We believe the most effective form of recycling is often the simple act of passing something on. Our dedication to beautiful quality ensures the longevity of STAINLESS INOX products, which are crafted to the highest standards and designed to become cherished heirlooms for future generations.

- **APPLIED METAL:** Our metals are applied as a veneer, a process that uses significantly less metal and power compared to traditional casting or sheet metal methods. This approach is far cleaner, resulting in much reduced pollution during production.







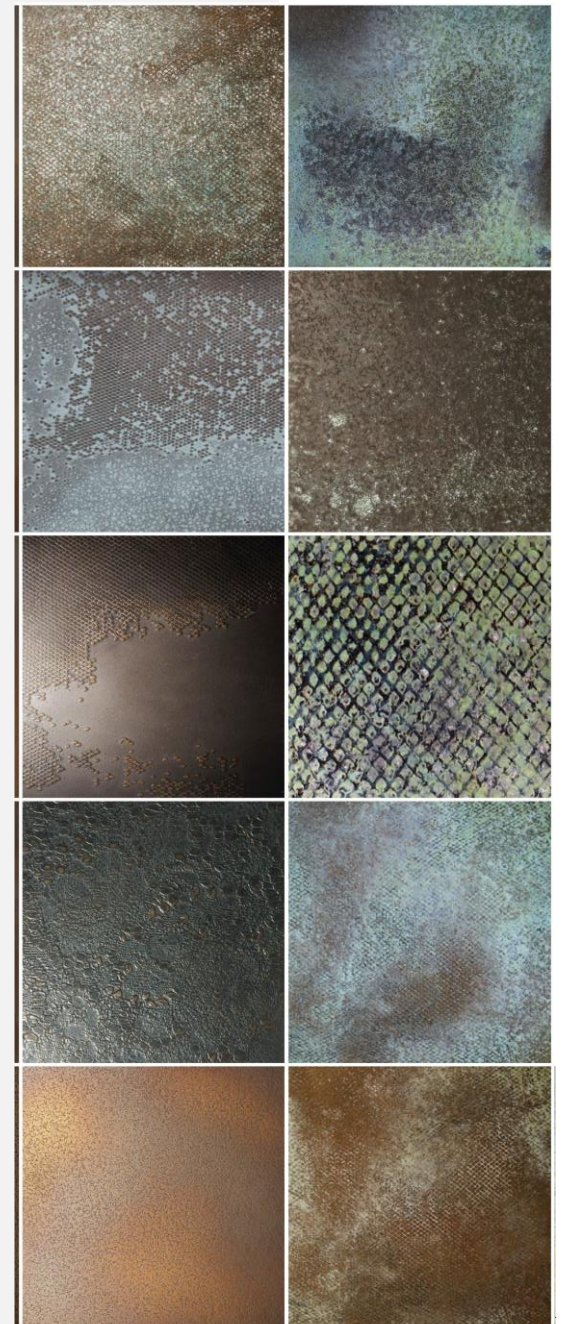
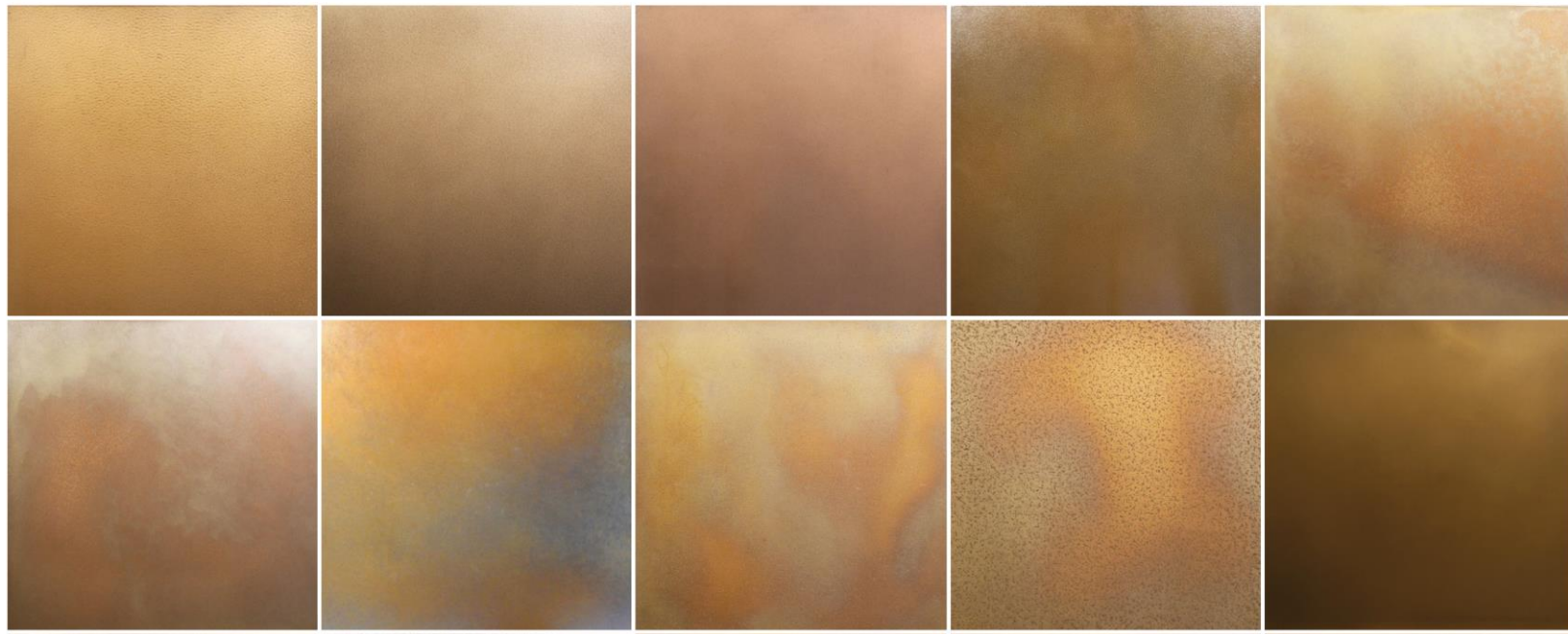
# FINISHES

*FINISHES*



## BRONZE, TREASURY BRONZE & GOLD BRONZE

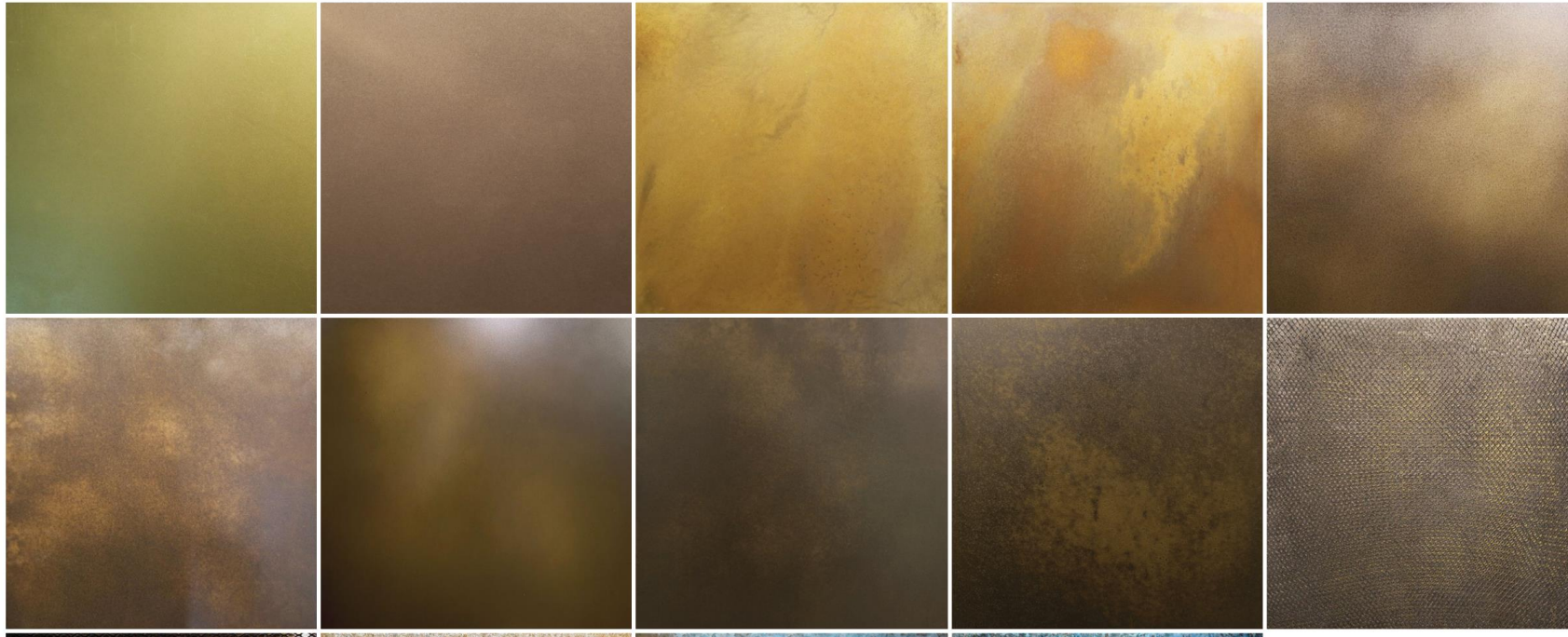
Our Bronze surfaces are available in a range of textures, aged patinas and surface effects. The swatches below show examples of the different combinations available.





## BRASS

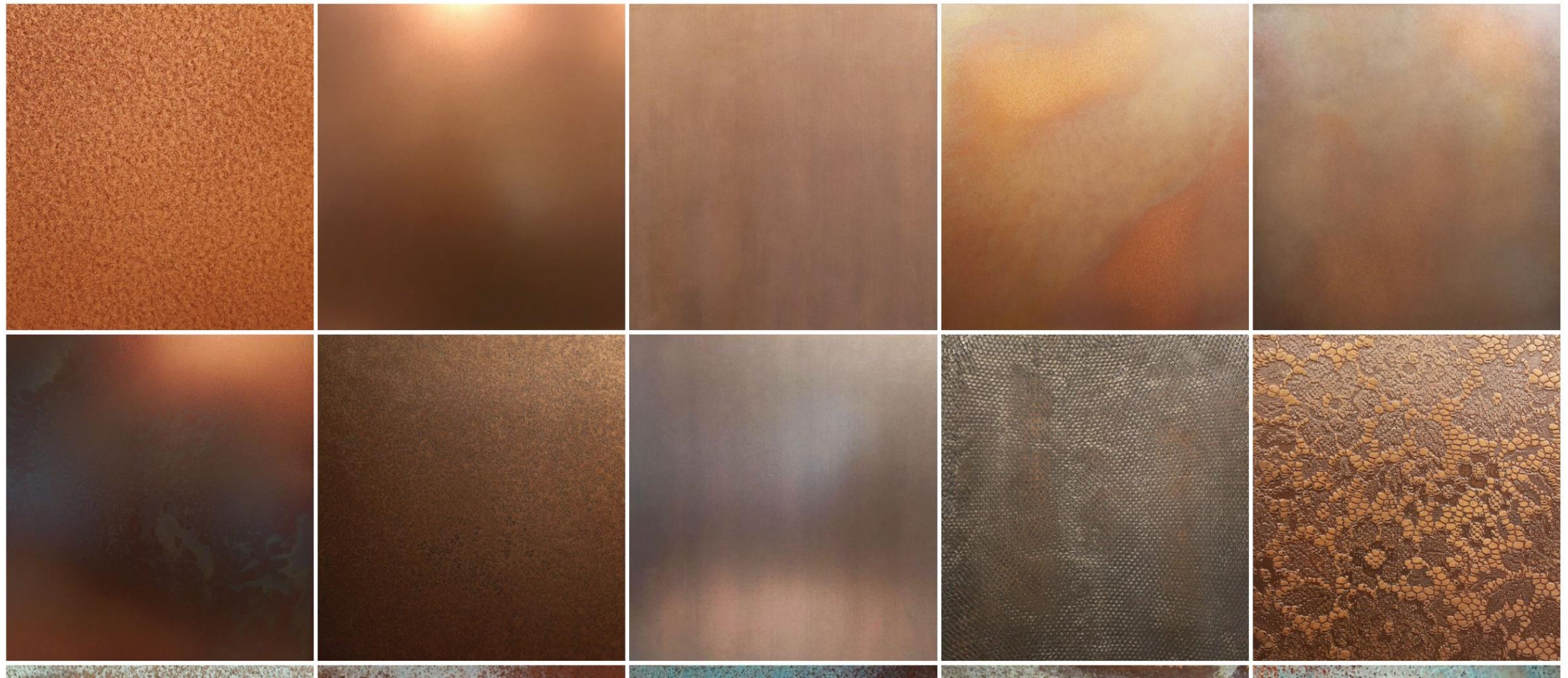
Our Brass surfaces are available in a range of textures, aged patinas and surface effects. The swatches below show examples of the different combinations available.





## COPPER & SENTINEL COPPER

Our Copper surfaces are available in a range of textures, aged patinas and surface effects. The swatches below show examples of the different combinations available.





## SILVER & CHAMPAGNE TONES: ALUMINIUM, ZINC, STAINLESS STEEL, NICKEL, GOLD NICKEL, SILVER NICKEL, ROSE ALLOY

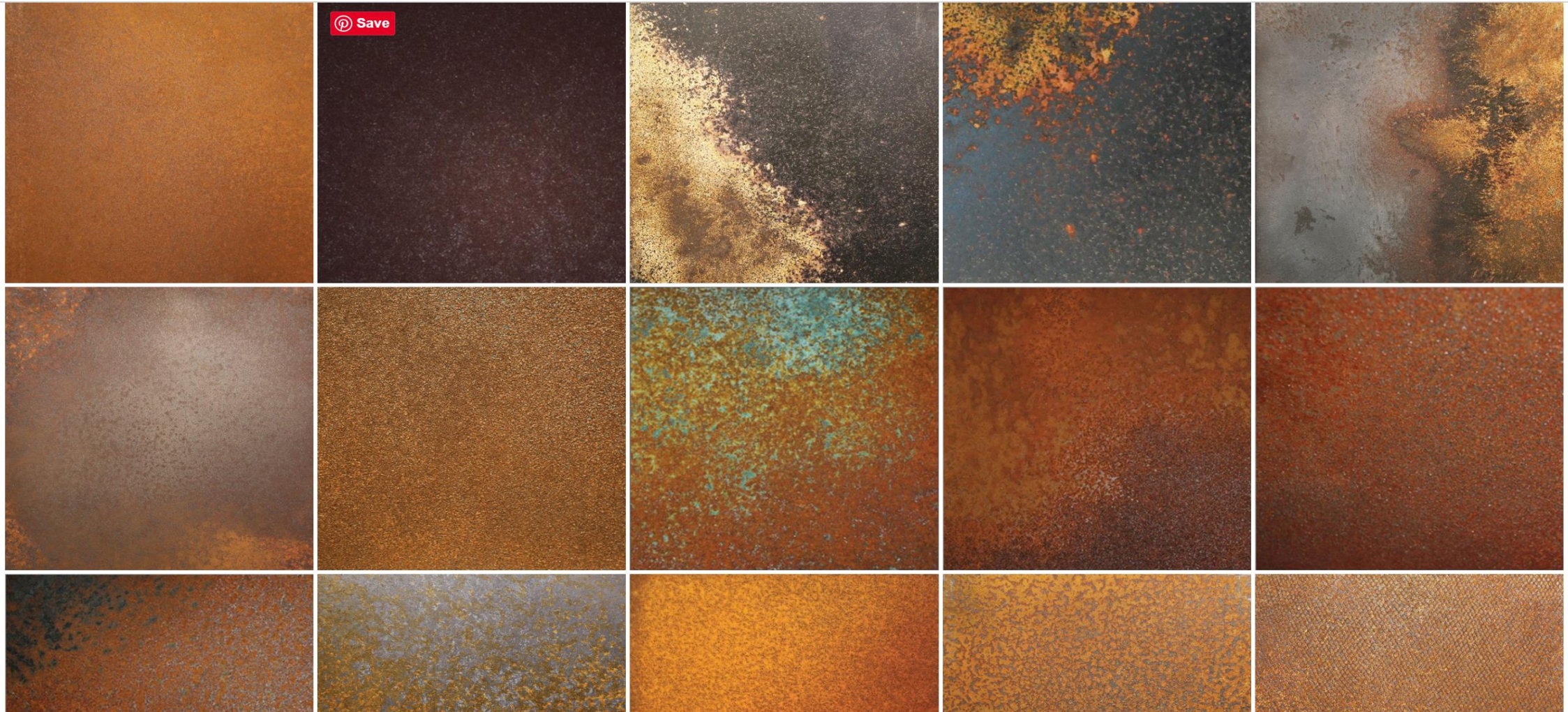
Our silver toned surfaces are available in a range of metals, textures, aged patinas and surface effects. The swatches below show examples of the different combinations available.





## RUST, WEATHERED STEEL & CORTEN STYLE COATINGS

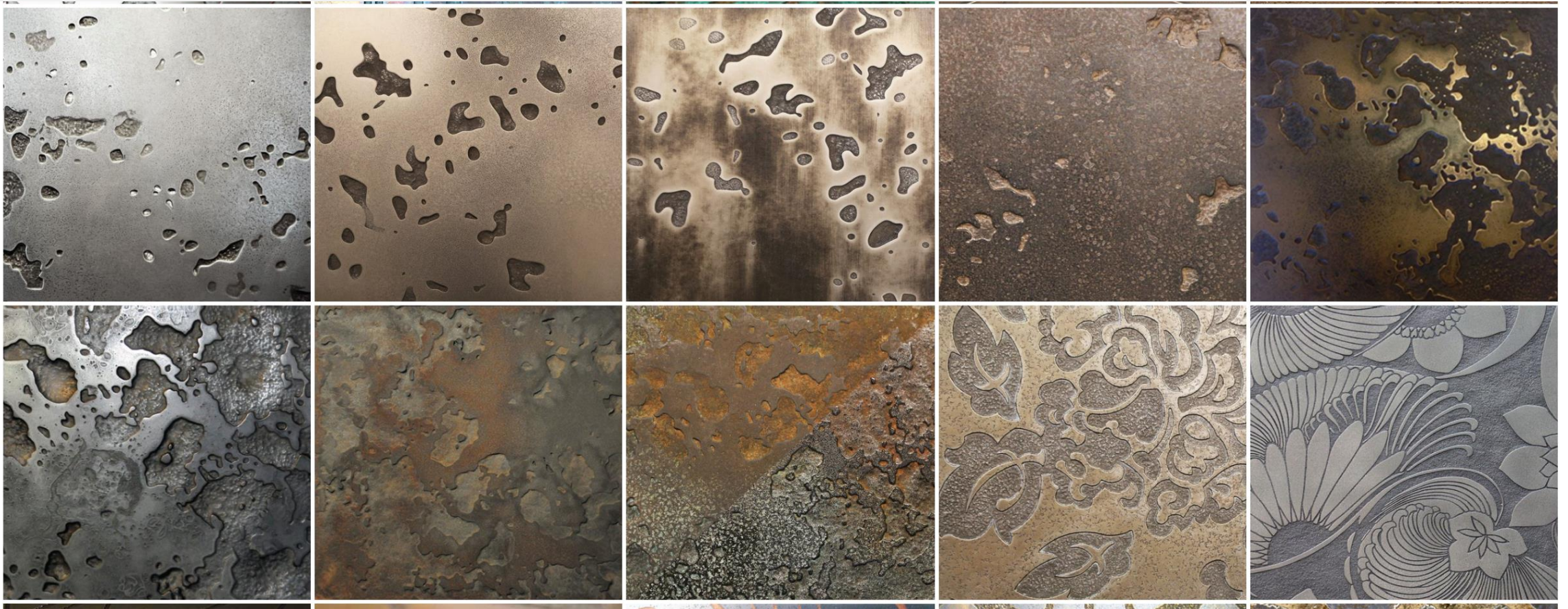
Our Rust surfaces are available in a range of textures, aged patinas and surface effects. The swatches below show examples of the different combinations available.





## PATINAS AND AGEING

By applying one (or more) of our aged effects, the colour and feel of our metals can be subtly or dramatically changed. Our patinas include: Black or Brown Florentine which darkens the metal, Verdigris which adds a powdery blue-green patina and Pearl Patina which adds a vibrant, pearlescent lustre. Ageing effects can be worked after treatment to expose the metal colour through as desired.







# PRODUCTS

*VARIOUS PRODUCT*

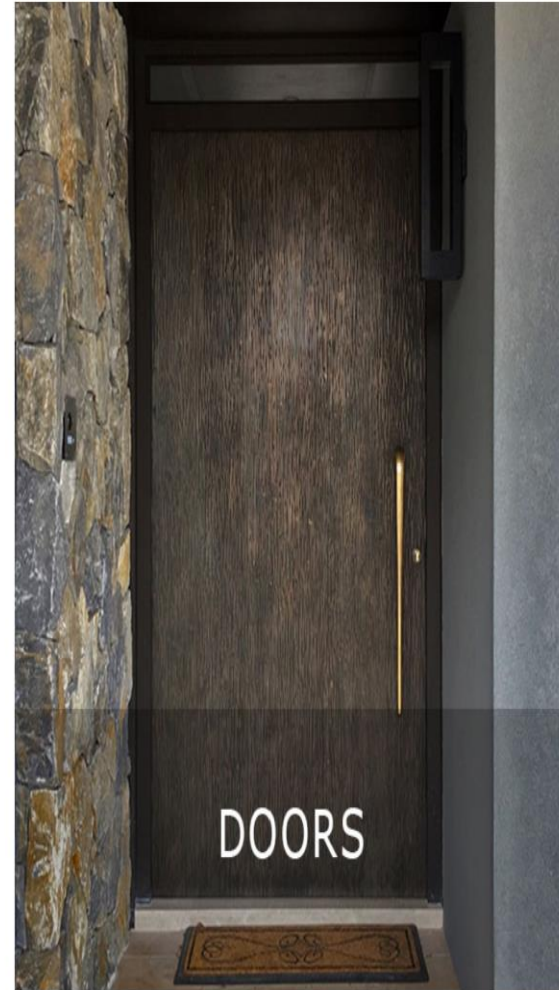


## Contemporary Doors

Perhaps a door transcends its basic function, becoming an artistic expression cleverly disguised as an entryway. At STAINLESSINOX, we conceive of doors not merely as utilitarian items but as functional sculptures.

With our advanced 3D PAINT technology, we can apply virtually any design onto our doors, no matter how intricate, transforming the once unimaginable into reality. STAINLESSINOX makes it simple to achieve a highly personalized statement entry piece, whether you envision intricate detailing or minimalist elegance, the allure of aged or polished semi-precious metals, or the raw textures of rust, stone, or concrete.

# DOORS

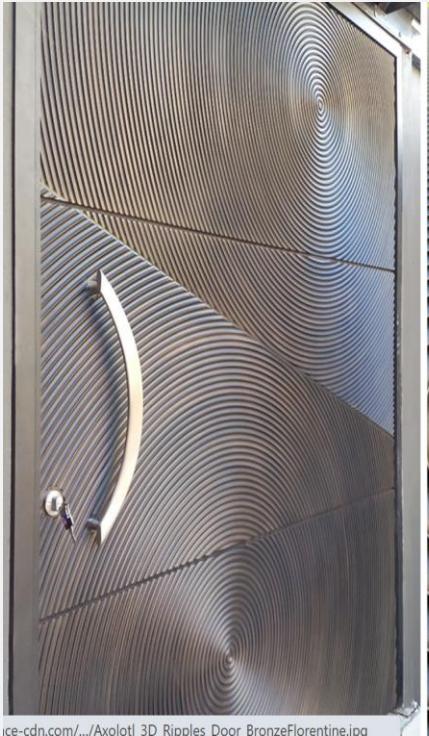


*CONTEMPORARY  
DOORS*

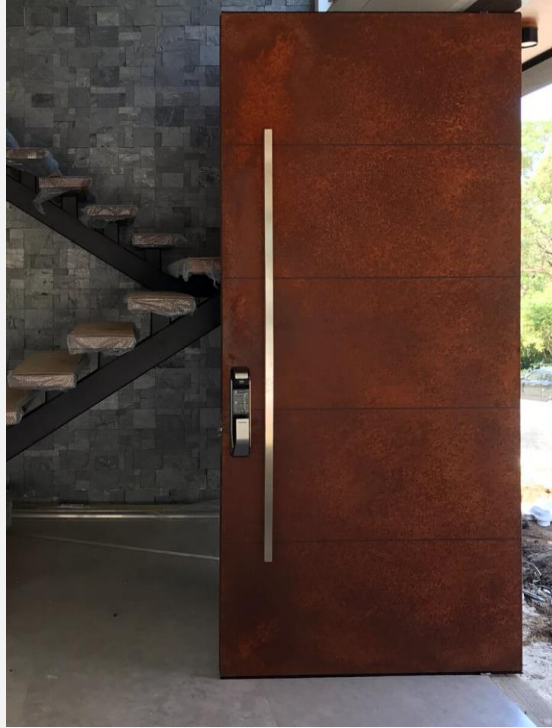












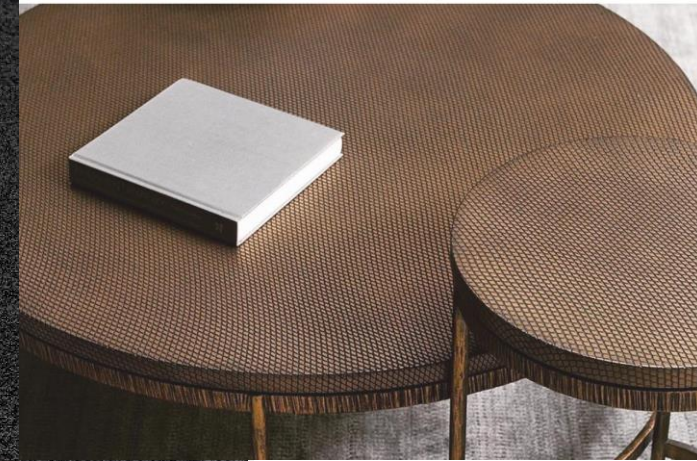


## Furniture

The durable nature of STAINLESS INOX surfaces renders them ideal for crafting a wide range of furniture, including seating, tabletops and bases, fireplace surrounds, cabinets, and light fittings.

Pieces can be constructed from virtually any material and expertly bonded or inlaid with STAINLESSINOX metal, concrete, or terracotta surfaces. This facilitates ease of construction without compromising on style.

Select from our extensive palette of textures, metals, and patinas, and combine them with STAINLESS INOX's innovative carving or etching processes to create a truly unique and bespoke feature piece.



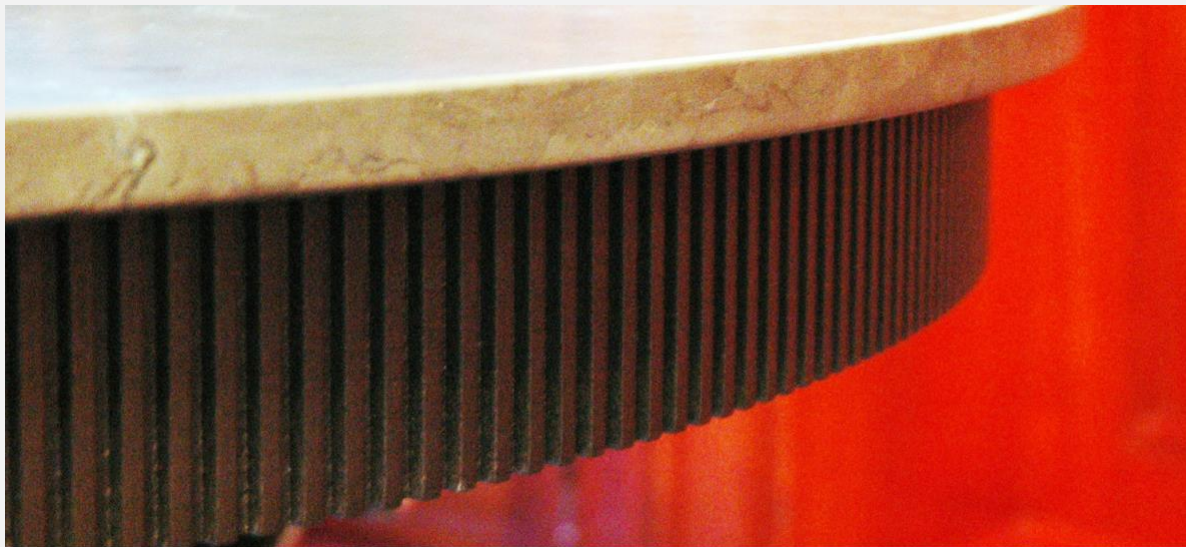
# FURNITURE

*CONTEMPORARY  
FURNITURE*











## Furniture

The durable nature of STAINLESS INOX surfaces renders them ideal for crafting a wide range of furniture, including seating, tabletops and bases, fireplace surrounds, cabinets, and light fittings.

Pieces can be constructed from virtually any material and expertly bonded or inlaid with STAINLESSINOX metal, concrete, or terracotta surfaces. This facilitates ease of construction without compromising on style.

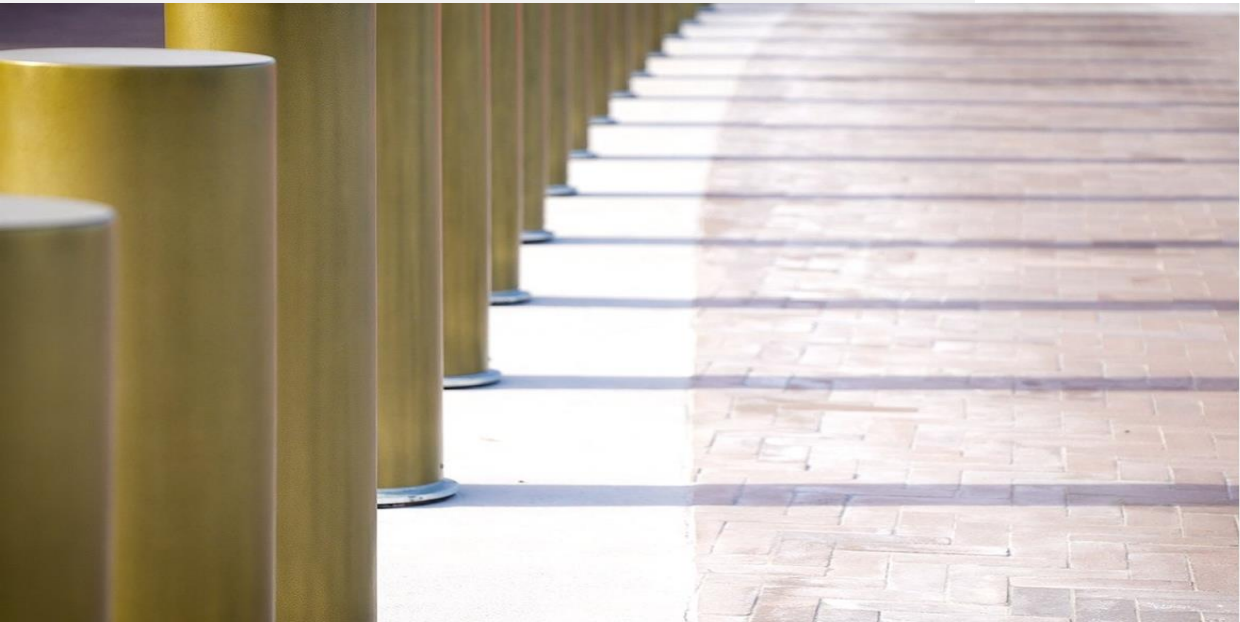
Select from our extensive palette of textures, metals, and patinas, and combine them with STAINLESS INOX's innovative carving or etching processes to create a truly unique and bespoke feature piece.

# LANDSCAPE



*LANDSCAPE*













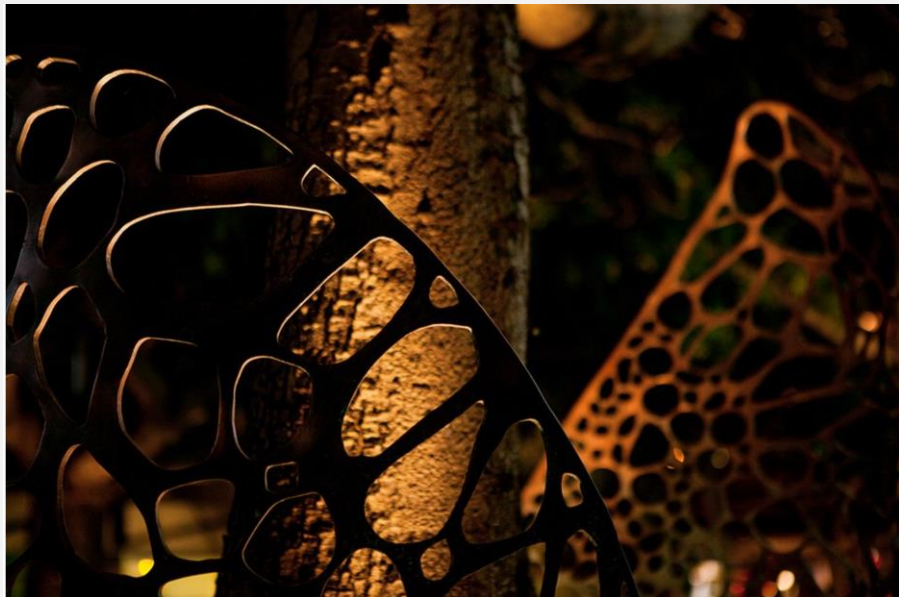
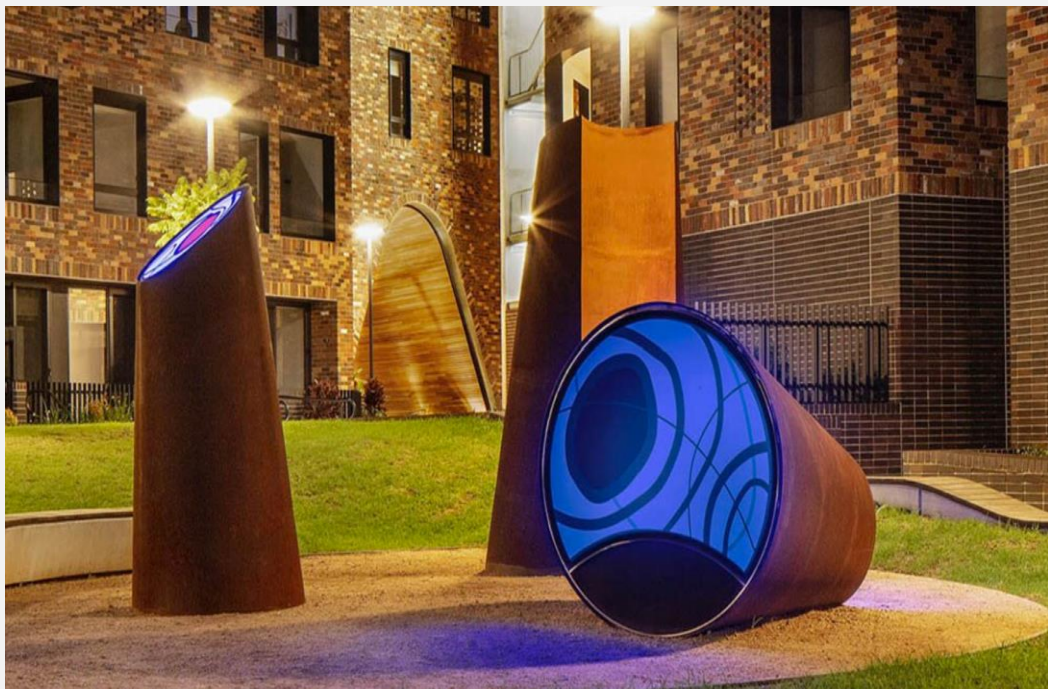
Stainlessinox Art Projects delivers comprehensive artwork and creative design solutions throughout the entire production process.

We are dedicated to exceeding expectations at every stage of our collaboration, from initial concept to final installation.

# ART WORK

*ART WORK*













# OUR FACILITY

*FACILITY*





## WATERJET CUTTING

Waterjet is a generic term used to describe equipment for cutting or cleaning purposes using a jet of water at high velocity and pressure, or a mixture of water and an abrasive substance. Waterjet is the most versatile process, because it is able to cut almost any type of material. Abrasivejet is a subcategory of waterjet in which abrasive is introduced to accelerate the process. The mixing of abrasive particles in water jet in such a manner that water jet's momentum is transferred to the abrasives.

### Capabilities

	Thickness	Max. Width	Max. Length
	0.5-50mm	2,000mm	6,000mm
Auto-Riding Cutting	0.5-50mm	3,500mm	12,000mm

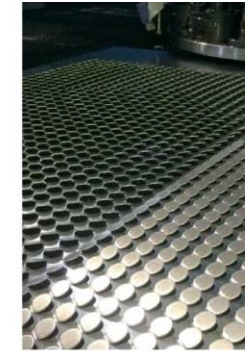


## PERFORATION

Punch presses are developed for high flexibility and efficient processing of metal stampings. The main areas of application are for small and medium runs. This method is used where the application of lasers are inefficient or technically impractical. Punching is often the cheapest method for creating holes in sheet metal in medium to high production volumes. When a specially shaped punch is used to create multiple usable parts from a sheet material the process is known as blanking.

### Capabilities

	Type	Max Thickness	Max Width	Length
CNC Sheet to Sheet	S.S	3mm	1,500mm	3,000mm
	S.S	1mm	1,250mm	
CNC Coil to Coil	G.I	1.2mm	1,250mm	
	Alum.	1.5mm	1,250mm	



## LASER CUTTING

Laser cutting is a technology that uses a laser to cut materials, and is typically used for industrial manufacturing applications. A laser is a device that generates an intense beam of coherent monochromatic light used in drilling and cutting, alignment and guidance.

### Capabilities

Details	Max Thickness	Max. Width	Max. Length
Stainless Steel	12mm	1,500mm	3,000mm
Aluminium	6mm	1,500mm	3,000mm
Brass	6mm	1,500mm	3,000mm
Copper	6mm	1,500mm	3,000mm



## V GROOVING

Bending metal using a V Grooving machine allows it to be folded to a tight radius or sharp corner. This enables folded metal to mimic solid bar material at around a tenth of the cost and also avoids wastage. V Grooved profiles look just like solid bar material but are light in weight and easier to transport and install.

V Grooving can be created not just in one shape of V. Wide V, semi-circular and square grooving are also possible allowing for a range of design variations.

### Capabilities

	Dia	Length	Surface
Stainless Steel Sheet	3mm	1,200mm	4,000mm



METAL SERVICES



# THANK YOU



**STAINLESSINOX** International FZCO

EWTA 78, Jebel Ali Free Zone North, Dubai, UAE

Tel: +971 4 880 6198, E-Mail: [info@stainlessinox.com](mailto:info@stainlessinox.com), Web: [www.stainlessinox.com](http://www.stainlessinox.com)