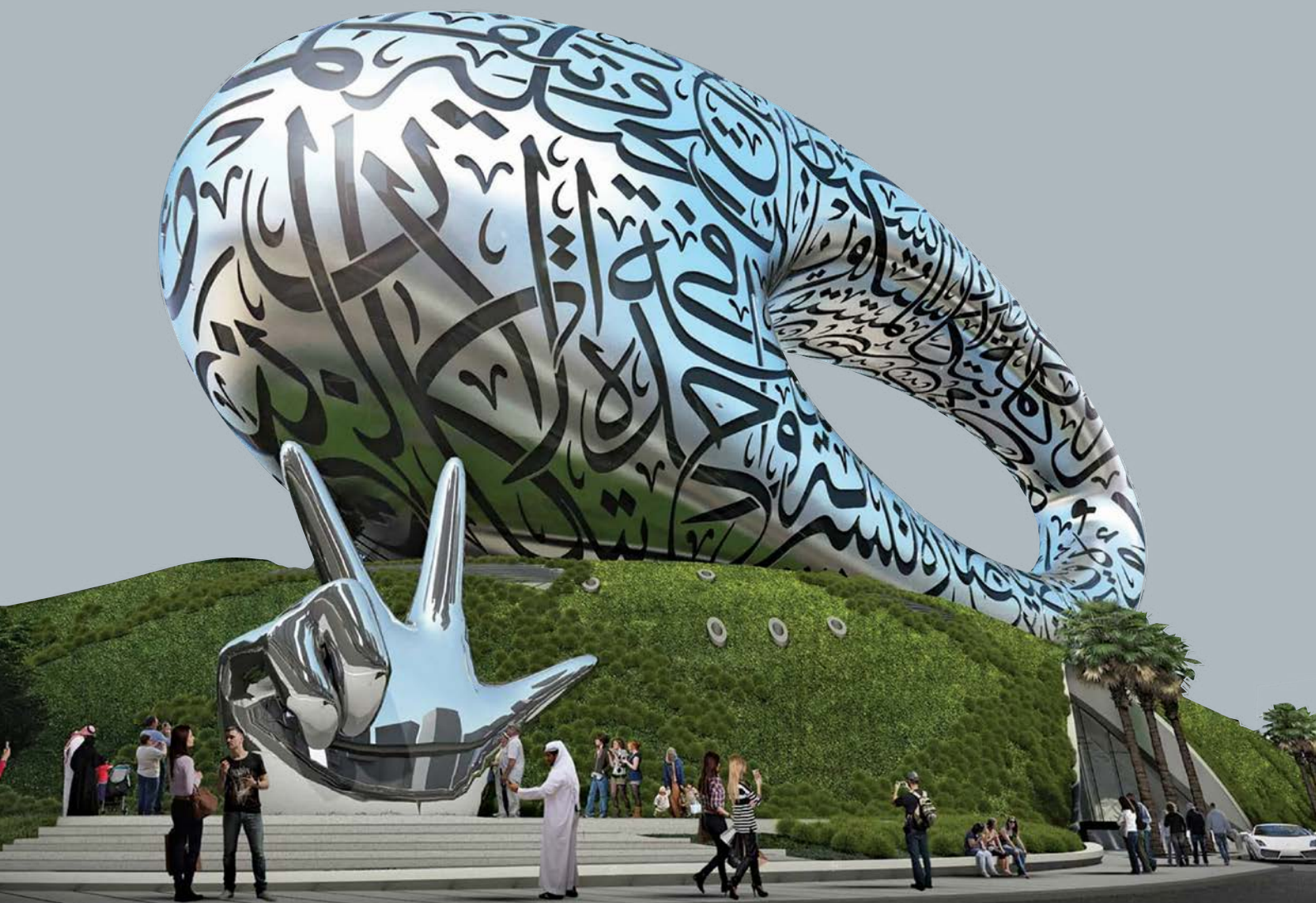
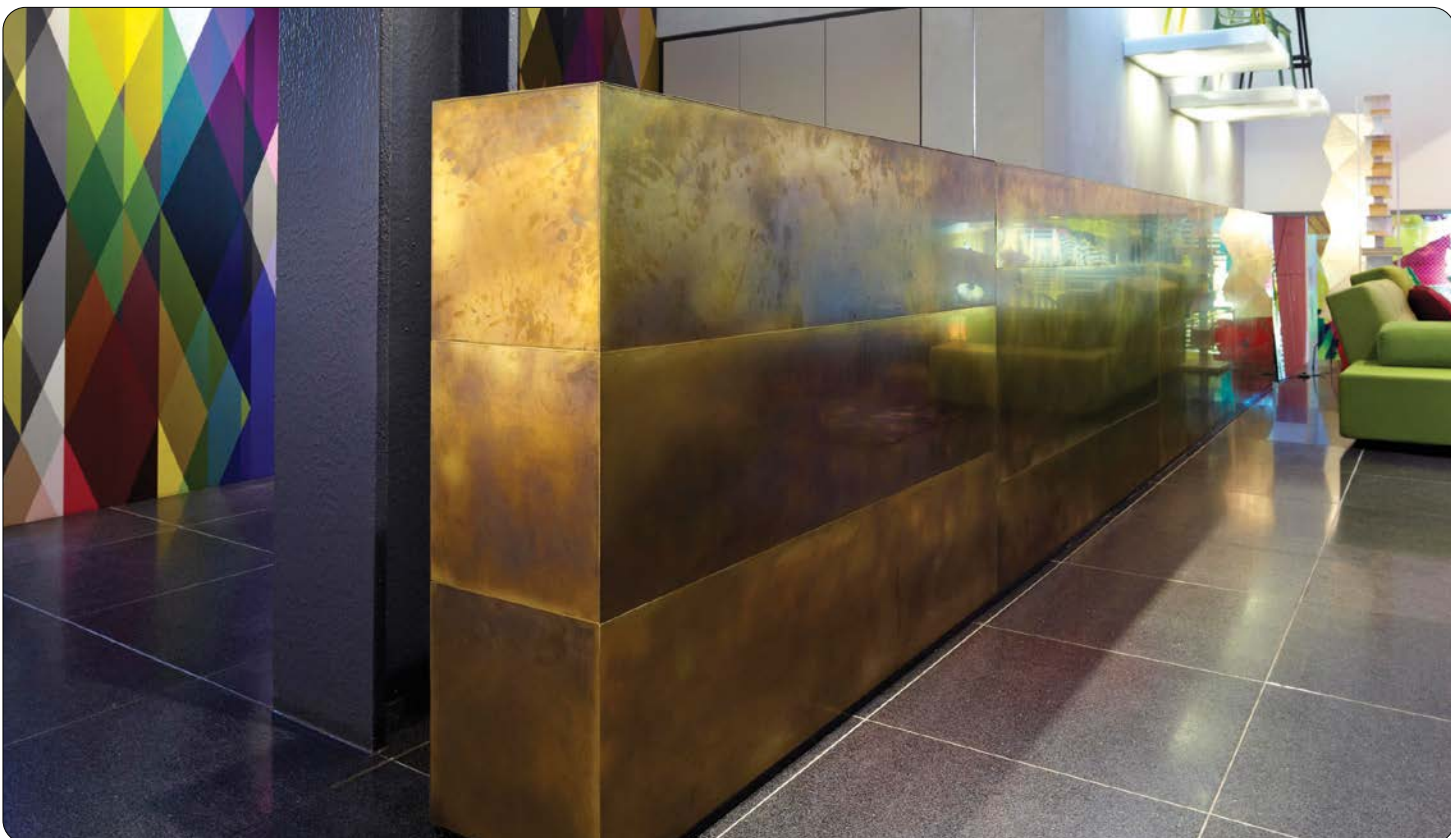
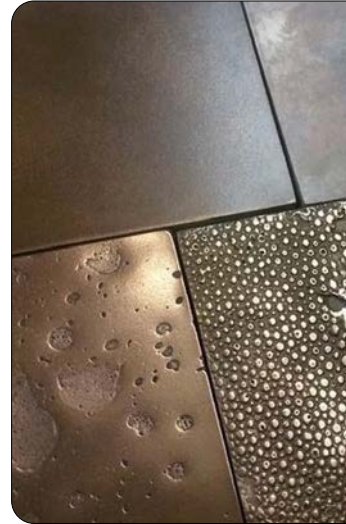




ANTIQUE PATINA



STAINLESS STEEL DECORATIVE FINISHES
FOR ARCHITECTURAL APPLICATIONS





ANTIQUÉ PATINA

The word patina derives from the Italian patina to mean 'a shallow layer of deposit on the surface.' Now used to refer to any signs of ageing of an antique, whether it be fading, darkening, or oxidising, patination occurs on almost any material.

Patina is caused by oxidation when an antique is exposed to natural elements. The oxidation occurs when the chemicals on the antique item begins to react with the oxygen, which is what causes the colour changes.

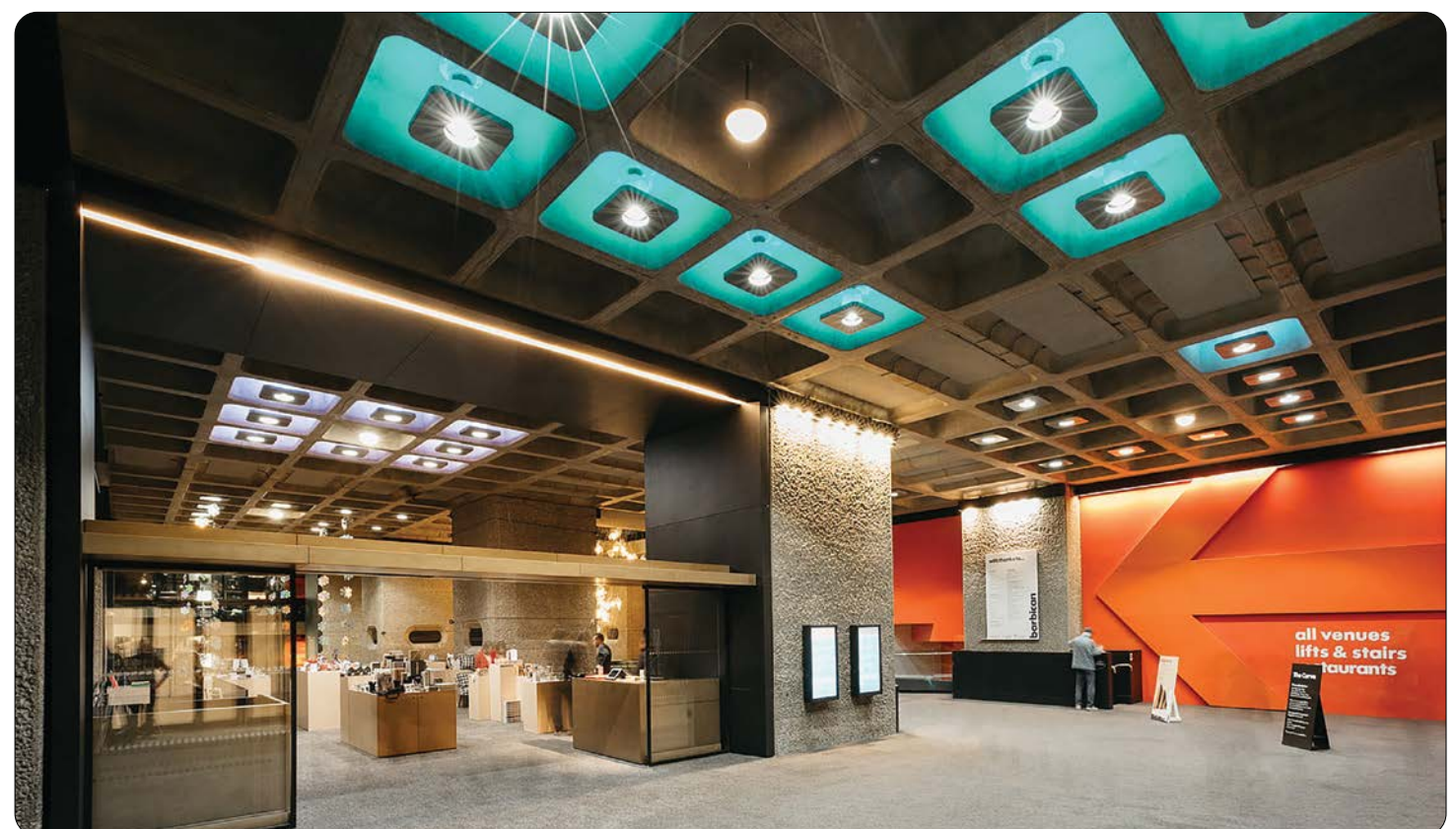


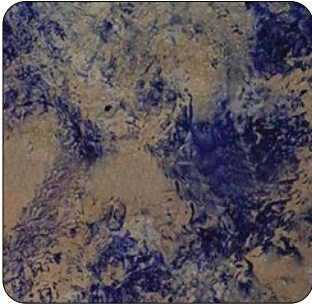
Metal has increasingly become an element of interior design. Whether in architecture, in living room design, in shop fitting, in industrial furniture or in the application for product design:

Metal is extremely versatile and stands for very high-quality appearances.

The metallized surfaces offer shop owners, interior decorators, architects, interior designers and industrial designers a variety of options for creative, individual designs. The sprayable metals can be processed seamlessly and are ideal for three-dimensional object

A variety of metal types and different finishes make the surfaces look matt, shiny, textured, rusty or patinated, depending on the work involved. The InnoMetal surfaces have all the properties of solid, massive metal in terms of look and feel.





SS ANTIQUE MIRROR SILVER



BURNT SKY PATINA



TEXTURED OLD BLACK BRONZE



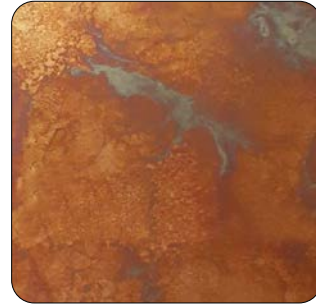
COPPER PATINA



TEXTURED BURNT BLACK



BLACK IRON PATINA



RUSTIC COPPER



CLEAR BLACK BRONZE PATINA



LIGHT ANTI. HL BRASS



ANTIQUE HL BRASS



RUSTIC IRON



RUSTIC BRASS

