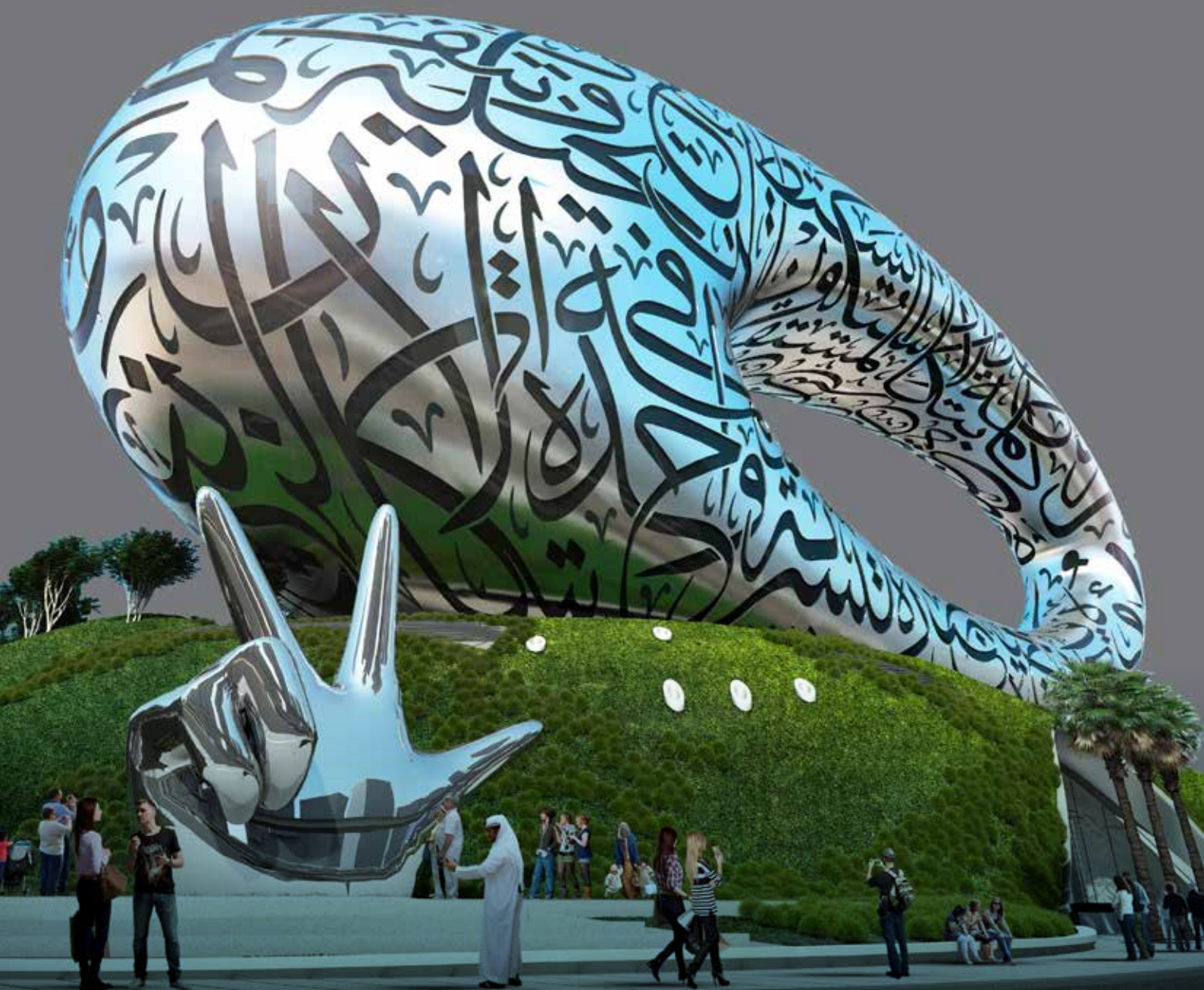




STAINLESS PRODUCTS AND
SOLUTIONS FOR ARCHITECTURAL
AND INDUSTRIAL APPLICATIONS





MD'S MESSAGE	3
MANAGEMENT & ORGANIZATIONAL CHART	4 / 5
PROFILE	6
MISSION / VISION	7
ARCHITECTURAL SOLUTIONS	9 / 15
ARCHITECTURAL PROJECTS	16 / 18
INDUSTRIAL SOLUTIONS	19
FLAT PRODUCTS	20
LONG PRODUCTS	21
QUALITY POLICY	22
SOURCE OF STOCK	23

MD'S
MESSAGE



Dear Business Partner

It is with no small measure of pride that I look back and see over 10 years of innovation, passion, outstanding service standards and the drive to always be our best. A couple of decades ago, nobody would have thought that the UAE would achieve such greatness and world acclaim. We, at Stainlessinox, are proud of the fact that we chartered a similar destiny with the nation, growing in leaps and bounds; creating a legacy of success and achievements.

We have come a long way from a medium sized metal trading company to becoming one of the most recognized product and solution providers in stainless steel and allied metals to architectural and industrial sectors across the GCC and the Middle East.

Today, many well-known architectural and industrial companies in the region rely on our innovative products and solutions that give life to their creations. We have supplied our quality products to many esteemed projects like Sky View Towers, Louvre Museum, Riyadh Metro, Expo 2020, Royal Atlantis, The Museum of The Future and are capable of meeting challenges that seem impossible.

I can say with justified confidence that we will keep delivering cutting-edge solutions and world-class products in the future too.

Thanking you with an underlined endeavor to serve all your stainless steel requirements in the future.

Warm regards
HITESH SANGHVI

MANAGEMENT & KEY PERSONNEL



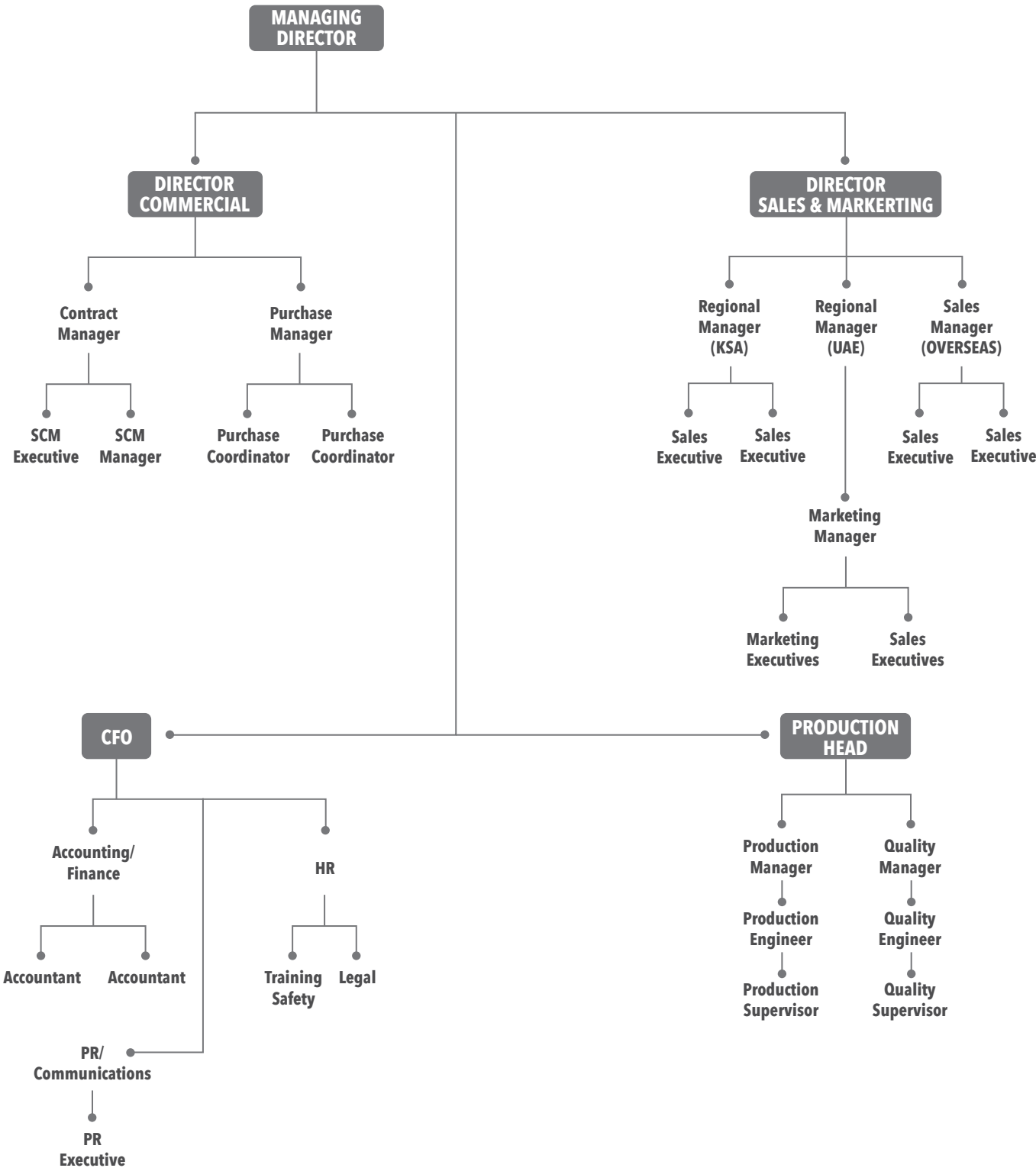
ALPESH JAIN
Director - Commercial

After completing his degree, Alpesh started his career in Mumbai with a metal trading company.

He has evolved as a motivated and experienced professional to oversee day-to-day operations and has developed an ability to pursue and capture new businesses.

He has an eye to identify opportunities, pursue and capture new businesses. With several years of experience he looks after financial management of projects, putting together bids for new work and negotiating and agreeing to contracts.

He has a remarkable track record in overseeing projects from inception to completion, and identifying and mitigating risks involved. The ability to nurture relationships with clients throughout projects is ably looked after by him. His role involves developing and managing a cross-functional team with a variety of skills and experience, as well as collaborating with other departments. He also enterprises great communication, teamwork, leadership and analytical skills.



MANAGEMENT & KEY PERSONNEL



PRAVEEN TYAGI
Director - Sales & Marketing

After completing Masters in Business Administration, Praveen began his career as a sales professional with TATA Steel, India.

After a successful tenure with TATA, he was absorbed by Mittal Group, Bulgaria, Europe, which exposed him to dynamics of the global steel sector.

Praveen's career graph rose further when he got employed by OUTOKUMPU - the oldest and the largest stainless steel manufacturer in the world, and before taking over the reigns of STAINLESSINOX, Dubai, as Director of sales, he headed some of the most recognized stainless steel companies in GCC.

Currently positioned as the Group Sales Director, Praveen is overlooking domestic and overseas sales and marketing at STAINLESSINOX. The company, which was solely in stock and supply of stainless steel flat and long products, has expanded into manufacture of Decorative Sheets (Finishes), Decorative Metal Fabrication and Metal Services.

The company has made sound in-roads into many new markets across East Europe, GCC, South East Asia and Africa.



Profile

StainlessInox International FZCO was established in 2010 with the core focus of being one of the UAE's leading stockholders, suppliers and exporters of Stainless Steel **Flat Products** - Coils, Sheets and Plates. Over the years, the company has exponentially grown by consistently enhancing its product portfolio to **Long Products** - Angles, Bars and Channels, and process, manufacture and supply of decorative stainless-steel finishes (sheets) for various architectural applications. Furthermore the organisation has heavily invested in some of the best equipment and machinery to carry out a wide range of metal services.

Our main facilities in JAFZA South, Dubai, are complemented by ancillary offices and warehousing facilities in many GCC countries to efficiently serve our clients in the GCC, MENA, Europe and Asia.

Our pragmatic growth is an attribute to our able leadership and a dedicated workforce which understands and complies with the organisation's initiatives and underlined objectives.

Mission

- Continually building our skills and knowledge to meet the growing and diverse needs of customers.
- Ensuring that the products and solutions are purposefully engineered to suit each customer with a focus on high service standards, on time deliveries and competitive prices.
- Sustaining our reputation as a reliable and customer-oriented stainless steel manufacturer and supplier in the market.
- Achieving profitable growth, operational and organizational excellence without compromising from our values and business ethics.

Vision

- Maintaining quality, integrity and high standard at all levels of operation.
- Keeping our name synonymous with reliability, customer satisfaction and innovation.



ARCHITECTURAL

StainlessInox has been recognized as one of the most premium stainless steel product and solution providers in the GCC and the Middle East. We manufacture a wide range of stainless steel decorative finishes apart from sourcing, stocking and supplying world-class stainless steel flat and long products to the architectural industry in GCC, Middle East, Southeast Asia.

- Decorative Finishes
- Decorative Metal Fabrication
- Stainless stain products
- Metal Services



DECORATIVE FINISHES

We specialize in the design and manufacture of a wide array of decorative stainless steel finishes for various interior and exterior architectural applications.

Our finishes are distinctive in pattern and color, and have high durability.

- | | |
|----------------|--|
| ■ Brush | ■ Coloured Stainless Steel Sheets & Fabricated Items |
| ■ Bead Pattern | |
| ■ Hairline | ■ ETCH Pattern |
| ■ Satin | ■ Anti-Finger |
| ■ Mirror | |

BRUSH

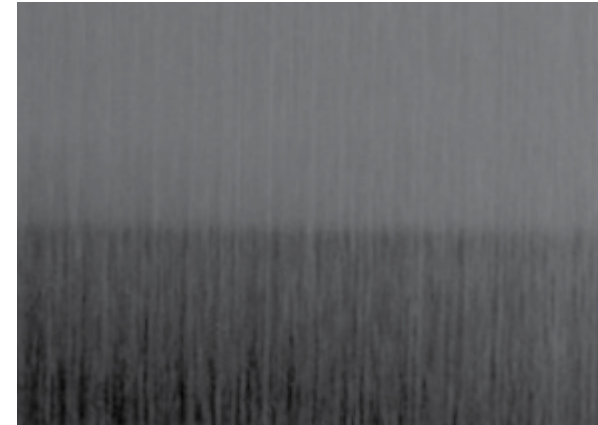
Brushed metal has a dull polish and is made through friction. The metal is polished with a fine bristle brush on a belt or wheel that moves in the same direction the whole time, then softened with a greaseless compound or a medium non-woven abrasive belt or pad. This leaves a dull, matte sheen on the steel. Although it loses its ability to reflect light, the steel retains some of its lustre and gains very fine lines in the direction of the brushing. It is a distinctive look that is often chosen for decorative items.



HAIRLINE

Hairline grinding produces long, continuous lines, with a specific direction, on the stainless steel surface.

Variations of grain sizes (from fine to coarse), and different widths and configurations of the grinding lines on the stainless steel surface result in many hairline finish options to choose from. The Hairline finishes are smoother, reflective and are used primarily as a decorative product.



BEAD PATTERN

SATIN

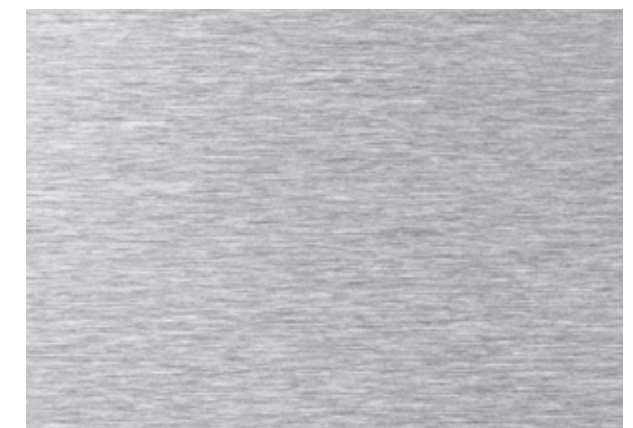


This finish is achieved using fine abrasives, which are fired at the stainless steel surface in a stream of compressed air. Bead blasting results in a non-directional textured surface with a soft satin reflection and low reflectivity.

A range of coarsenesses can be created, depending upon the media used and the thickness of the material treated. Unlike acid etching, no material is removed from the surface during the blasting process, but the character of the surfaces produced by these two processes are similar.

There are differing opinions on what a satin finish looks like on stainless steel. To some, satin is the same as a brushed finish. To others, it means a translucent, frosted "milky" look.

Satin finishes can be obtained with metal brushing, or they can be scratched with sandpaper or other abrasive material rather than with a metal brush. A brushing technique results in a long stroke pattern, and will provide a randomized look with no discernible pattern. Many satin finishes end with a polishing step to infuse the stainless steel with an elegant shine.



MIRROR

Mirror finishes are created by mechanically treating the surfaces with a series of progressively finer abrasives. Alternatively, a special rolling procedure is used which can simulate the appearances of mechanical abrasion. For this stage, it is essential to remove deep scratches, as any surface defects will be very noticeable on the finished products.

The final process involves buffing the surfaces for 5-10 minutes to create mirror-like, highly-reflective finishes. It is a popular finish among architects and interior designers.



PVD

The PVD process (sputtering) results in the deposition of plasma on the stainless steel surface, giving it its new strength and shine. The coloured surfaces include gold, rose gold, dark red, bronze, blue and black.

The PVD colours will not fade over time, and have the benefits of being more uniform in appearance and more abrasion-resistant than colouring, which is done by the electrochemical processes.

ANTI FINGER

Anti-fingerprint resin is applied, as a substance, to stainless steel sheets after the Polishing Process.

The features are waterproof, easy-to-clean, anti-corrosive, finger print resistant, and scratch-resistant. Due to its metallic lustre, it has a pleasing appearance, and is easy to maintain.

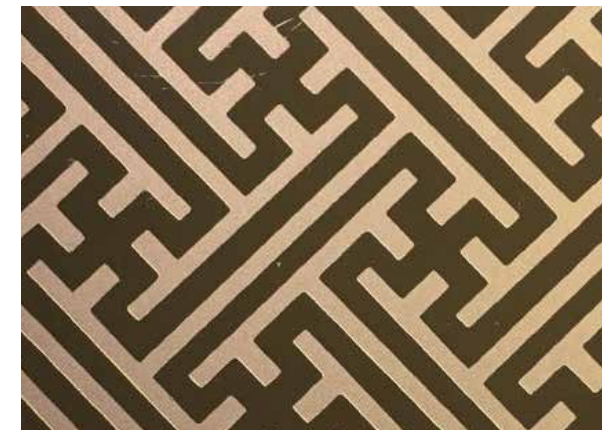


ETCH PATTERN

Etched patterns are created by selectively applying a protective chemical-resistant film to a highly-polished surface, and chemical-etching the unprotected areas.

The etching removes a thin layer of stainless steel, changes the colour to a dull silver-grey, and roughens the surface. The etched pattern can be left as it is, or made more reflective. Very elaborate patterns can be achieved.

We produce a huge variety of etch patterns for various architectural applications apart from offering customized patterns to suit our clients' requirements.



WATERJET CUTTING

Waterjet is a generic term used to describe equipment for cutting or cleaning purposes using a jet of water at high velocity and pressure, or a mixture of water and an abrasive substance. Waterjet is the most versatile process, because it is able to cut almost any type of material. Abrasivejet is a subcategory of waterjet in which abrasive is introduced to accelerate the process. The mixing of abrasive particles in water jet in such a manner that water jet's momentum is transferred to the abrasives.

Capabilities

	Thickness	Max. Width	Max. Length
	0.5-50mm	2,000mm	6,000mm
Auto Rotating Cutting	0.5-50mm	3,500mm	12,000mm



PERFORATION

Punch presses are developed for high flexibility and efficient processing of metal stampings. The main areas of application are for small and medium runs. This method is used where the application of lasers are inefficient or technically impractical. Punching is often the cheapest method for creating holes in sheet metal in medium to high production volumes. When a specially shaped punch is used to create multiple usable parts from a sheet material the process is known as blanking.

Capabilities

	Type	Max Thick	Max Width	Length
CNC Sheet to Sheet	S.S	3mm	1,500mm	3,000mm
	S.S	1mm	1,250mm	
CNC Coil to Coil	G.I	1.2mm	1,250mm	
	Alum.	1.5mm	1,250mm	



LASER CUTTING

Laser cutting is a technology that uses a laser to cut materials, and is typically used for industrial manufacturing applications. A laser is a device that generates an intense beam of coherent monochromatic light used in drilling and cutting, alignment and guidance

Capabilities

Details	Max Thickness	Max. Width	Max. Length
Stainless Steel	12mm	1,500mm	3,000mm
Aluminium	6mm	1,500mm	3,000mm
Brass	6mm	1,500mm	3,000mm
Copper	6mm	1,500mm	3,000mm



V GROOVING

Bending metal using a V-Grooving machine allows it to be folded to a tight radius or sharp corner. This enables folded metal to mimic solid bar material at around a tenth of the cost and also avoids wastage. V-Grooved profiles look just like solid bar material but are light in weight and easier to transport and install.

V-Grooving can be created not just in one shape of V. Wider V, semi-circular and square grooving are also possible allowing for a range of design variations.

Capabilities

	Dia	Length	Surface
Stainless Steel Sheet	3mm	1,200mm	4,000mm



ARCHITECTURAL PROJECTS



ATLANTIS THE PALM, DUBAI | IMPERIAL CLUB LOUNGE

Scope:

5 mm thick St. Steel Gr304 Plate with custom laser cut pattern and finished in Antiqued Brushed Bronze Finish.



ATLANTIS THE PALM, DUBAI | IMPERIAL CLUB LOUNGE

Scope:

6 mm thick Bronze Mirror with Etched Pattern with 5 mm thick St. Steel Gr304 frame in Antiqued Brushed Bronze Finish.



INTERSECT BY LEXUS, DIFC

Scope:

- Low Iron Laminated Glass Floor with Mirror Cladding.
- 6 mm thick St. Steel Gr304 mirror polished Ceiling Channels.
- Perforated St. Steel Gr304 wall cladding with Etched Lexus Logo Reflection.
- Automatic Single Leaf Sliding Doors with St. Steel Gr304 mirror polished surface.
- Glazed Balustrades with Mirror Polished St. Steel Gr304 Tube Handrails
- St. Steel Gr304 Tube Wall Mounted Handrails.
- St. Steel Gr304 mirror polished wall cladding.

ART WAREHOUSE, MINA ZAYED, ABU DHABI

Scope:

- Perforated Corten Cladding to Warehouse External Walls & Roofs.
- Double Glazed Units to 5 Nos. Courtyards inside Warehouse.
- Blackened Metal Cladding to Reception Areas.



WAFI MALL EXTENSION, DUBAI

Scope:

- St. Steel Custom Manufactured Light Fittings.
- Powder coated Aluminium Column Cladding.
- Glazed Balustrades.
- St. Steel Balustrades & Handrails.



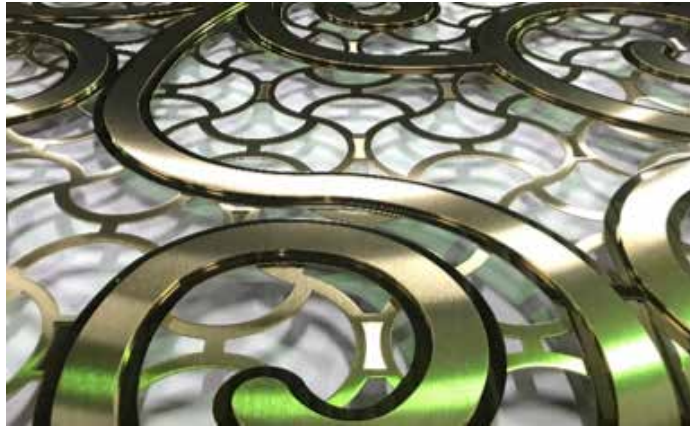
RAFFLES HOTEL, DUBAI

Scope:

- St. Steel Stairwell Cladding
- St. Steel Balustrades.
- Screens to Presidential Suite Bathrooms.
- Verdigris Copper Cladding.
- St. Steel Mirror Finished Column Cladding.
- Perforated Aluminium Driveway Screens
- Air Vented Bollards.



ARCHITECTURAL PROJECTS



DHIRUBHAI AMBANI INTERNATIONAL CONVENTION & EXHIBITION CENTER, MUMBAI, INDIA

Scope:

- Laser Cut 3-Layer Metal Screen in Gold PVD Coated Finish.
- Laser Cut 2-Layer Metal Screen in Mirror & Brushed Finish.
- Aluminium Metal Screen in Powder Coated Finish.



We are recognised as the most premium stockist and supplier of stainless steel flat and long products for architectural and Industrial applications. Our every supplied product is amicably sourced from some of the world's best stainless steel manufacturers. Quality and reliability have become integral part of our business while catering to escalating demands of our discerning clientele.

Flat Products

- Coils
- Strips
- Sheets (Cold Rolled)
- Sheets / Plates (Hot Rolled)

Long Products

- Angles
- Channels
- Flat bars
- Round Bars
- Square Bars

INDUSTRIAL

Coils (As per ASTM & AISI Standards)

	Thickness	Width	Length	Finish
	Ranging from 0.3mm to 12mm	1000 mm	In Coil Form	2B
		1219 mm		BA
		1250 mm		2D
		1500 mm		No.4
		2000 mm		HL
				No.1

Strips (As per ASTM & AISI Standards)

	Thickness	Width	Length	Finish
	Ranging from 0.3mm to 3mm	100mm to 600mm	In Coil Form	2B
				BA
				2D
				No.4
				HL
				No.1


Sheets Cold Rolled (As per ASTM & AISI Standards)

	Thickness	Width	Length	Finish
	Ranging from 0.3mm to 6mm	1000mm	2000mm	2B, BA
		1219mm	2440mm	Brush No.4
		1250mm	2500mm	Scotchbrite
		1500mm	3000mm	Mirror
		2000mm	6000mm	HL

Sheets / Plates Hot Rolled (As per ASTM & AISI Standards)

	Thickness	Width	Length	Finish
	Ranging from 3.0mm to 80mm	1000mm	2000mm	Mill Finish (1D) No.1
		1219mm	2440mm	
		1250mm	2500mm	
		1500mm	3000mm	
		2000mm	6000mm	

	Angles
	Thickness (mm) : 3.0 to 12.0
	Size (mm) : 20x20 to 100x100
	Length (m) : 6
	Finish: Mill finish

	U-channels
	Thickness (mm) : 5,6
	Size (mm) : 80x40 to 150x75
	Length (m) : 6
	Finish: Mill finish

	Flat Bars
	Thickness (mm) : 3.0 to 12.0
	Size (mm) : 20x100
	Length (m) : 6
	Finish: Mill finish

	Round Bars
	Thickness (mm) :
	Size (mm) : 3.0 to 200
	Length (m) : 6
	Finish: Mill finish

	Square Bars
	Thickness (mm) :
	Size (mm) : 5.0 to 50
	Length (m) : 4
	Finish: Mill finish



QUALITY POLICY

We are committed to manufacture, stock and supply stainless steel products to various standards, and to meet our customers' requirements with the highest quality, efficient pricing and timely delivery. We are also committed to comply and continually strive to enhance our quality management system by upgrading our equipment and continuously training our employees. We also ensure that the quality policy is communicated, implemented and documented at all levels by every member of the organisation.



SOURCE OF STOCK

We have been procuring our stocks from some of the world's most reputable stainless steel mills, as listed above, to maintain our position and prestige as a premium stainless steel product and solution provider in the existing markets and beyond.



STAINLESSINOX International FZCO

Head Office:

📍 EWTA 78 | Street No - N604

Jebel Ali Free Zone (North), Dubai United Arab Emirates.

☎ +97148806198

✉ info@stainlessinox.com

🌐 www.stainlessinox.com

GCC | AFRICA | EUROPE | ASIA